



University of California ≈ Cooperative Extension

Sutter/Yuba/ Butte Counties

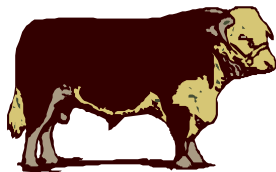
Sutter/Yuba Counties, 142A Garden Highway, Yuba City, CA 95991

Tel: (530) 822-7515, Fax (530) 673-5368

Butte County, 2279-B Del Oro Avenue, Oroville, CA 95965

Tel: (530) 538-7201, Fax (530) 538-7140

Herd 'Round the Range



Beef Day and Trade Show

CSU, Chico – UC Cooperative Extension

CSU, Chico Young Cattlemen – CBCIA

Saturday – February 19, 2005

8:00 - 9:00 am Registration, Trade Show

9:00 - 9:15 Introductions – Welcome - *Dr. Charles Crabb, Dean - College of Agriculture - CSU, Chico*

9:15 - 9:30 “Electronic Identification for Dummy’s”, *Dr. Dave Daley – California State University, Chico*

9:30 -10:15 “U.S. Beef Industry - Market Outlook”, *Randy Blach – Executive Vice President , Cattle Fax*

10:15-10:30 Break – Coffee, Doughnuts and Trade Show

10:30-11:00 “A Retailers Perspective on the Beef Industry”, *Mark Kreul – In-N-Out Burger*

11:00-11:30 Update - Northwest Pilot Project (Cattle ID), *Julie Morrison – Coordinator, Northwest Pilot Project*

11:30-12:10 “International Beef Trade in a Post BSE World”, *Randy Blach–Executive Vice President , Cattle Fax*

12:10-12:30 CCA Update

Mark Nelson – President, California Cattlemen’s Association

12:30-1:30 Tri-Tip BBQ and Trade Show, Young Cattlemen’s Auction

1:30- 2:00 Panel – Question and Answer Session, *Randy Blach, Mark Nelson, Mark Kreul and Julie Morrison*
Moderator - Dr. Dave Daley

Choose One Session or Visit the Trade Show

2:00 - 3:00 Fort Dodge Animal Health / CSU, Chico - Quality Assurance, *Pat Sweene –Fort Dodge Animal Health*

2:00 – 3:00 Weeds in Irrigated Pastures - *Josh Davie - UCCE*

3:00 - 4:00 Sessions Repeated

4:00 Meeting Adjourned

Agricultural Lands Return Flows Regulation

The Central Valley Region of California Regional Water Quality Control Board (Regional Board) has changed the regulation of the discharge of water off irrigated lands. Many ranchers are still asking what their options are. The intent of the program is to assure that the water quality of streams and rivers are not greatly impacted by agricultural runoff. Most of the concern is on herbicides, pesticides, fertilizers and soil flowing into streams. The Regional Board states that if you own or operate irrigated land and water drains from your property, including storm water runoff, you are a "discharger" and must be covered by:

1. A waiver
 - a. Join a Coalition
 - b. File your own waiver
2. File an individual waste discharge permit.

Under the Coalition option, a group of landowners in a watershed can band together and file a waiver with the Regional Board. The landowner pays an annual fee to the Coalition to cover the costs of water quality monitoring and reporting to the Regional Board. Landowners can choose to file their own waiver, which requires them to file a monitoring plan, collect data, and report to the Regional Board. Spreading the cost of the requirements over a large watershed and the administrative time required to get a plan monitoring accepted and implemented makes taking this process on by yourself a large burden physically and financially. Landowners can also file a Waste Discharge Permit, but this has large financial and administrative costs involved. Thus, most landowners are choosing to join a coalition, pay their fee and let someone else handle it for them.

With the limited returns on irrigated pasture, many ranchers are concerned about the increased costs of operation. Many have designed return flow systems that keep the water on their property during irrigation. The Regional Board has stated that if water flows off the irrigated pasture during the winter, when it rains, that a waiver must be obtained. For more information see the Regional Board web site at

http://www.waterboards.ca.gov/centralvalley/programs/irrigated_lands/index.html

GLENN NADER
UC FARM ADVISOR